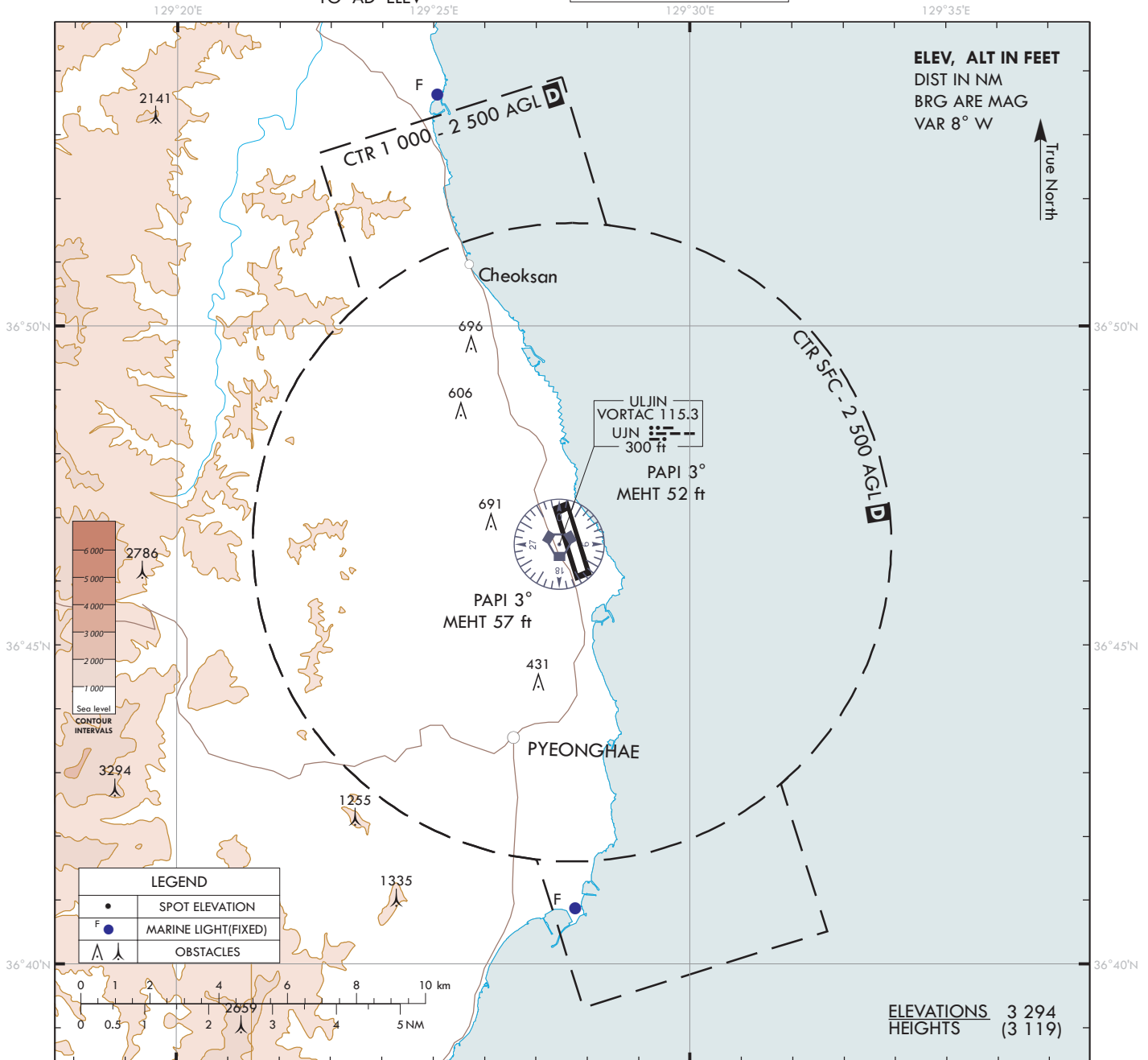


**VISUAL
 APPROACH
 CHART - ICAO**

AD ELEV 175 ft
 HEIGHTS RELATED
 TO AD ELEV

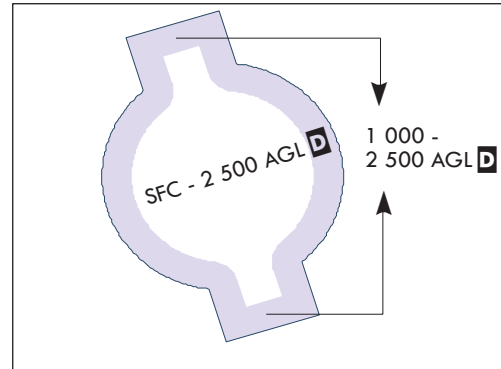
POHANG APP 122.55
 317.65
 ULSAN TWR 118.55

ULJIN/Uljin



VISUAL APPROACH PROCEDURE

1. Visual approach may be initiated by ATC or approved upon pilot request on traffic permitting basis when :
 - a. Ceiling : At or above 500 ft plus MVA
 - b. Visibility : Not less than 3 SM
2. ATS airspace : Class D(Refer to ENR 2.1-10)



Change : Page control.